

Handy Manual Pulse Generator



HM Series



Outline

HM series have a variety of switches which can be customized according to your requests. The model is compact and lightweight, which is perfect for accurate and smooth manual operation.

Features

- Various switches available : Emergency switch (2 positions), side mounted (right/left) enabling switches, 2 rotary switches (as axis and multiplication selector etc.)
- Compact, thin-line and lightweight.
- Strong plate magnets available on back side. (optional)
- RoHS compliant (box/cord)
- Various types of curl cords provided along with connectors of all sorts at your request.

Specifications

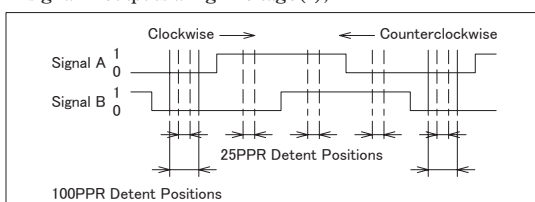
1. Body	
Dimension	145×73×35(mm)
LED light	DC24V Green
Enabling Switch	Available on both sides
Logo	Logo available on the wheel cover

2. Mechanical specifications	
2.1 Rotary Encoder Unit	

Output Voltage	DC5V±10%, DC12V±10%
Wheel	100 clicks / rotation 100 pulses or 25 pulses per rotation
Rotational Durability	Over 1,000,000 times

Output Waveform

- 1) Turning the shaft clockwise would generate the signal A when the signal B outputs a low voltage (0);
- 2) Rotating the shaft counter-clockwise would generate the signal A when the signal B outputs a high voltage (1);



* See RE45B page for details

2.2 Selector Switches

MR8A (Rotary switch) 25V15mA (AC/DC)
MR8C (Code switch) 15V10mA (AC/DC)
* See MR8A/MR8C pages for details

3. Curl/Straight Cords

Curl Cord	19/25-conductor shielded cable 19-conductor: select from 2m, 3m, 4m, 5m 25-conductor: select from 3m, 5m (We will select either 19 or 25-conductor in accordance with required functions) For further details, please see the catalogues for curl cords
	Straight Cord

4. Connector Unit

Connector	Dripproofed connector to be attached on the end of the cord optionally provided
-----------	---

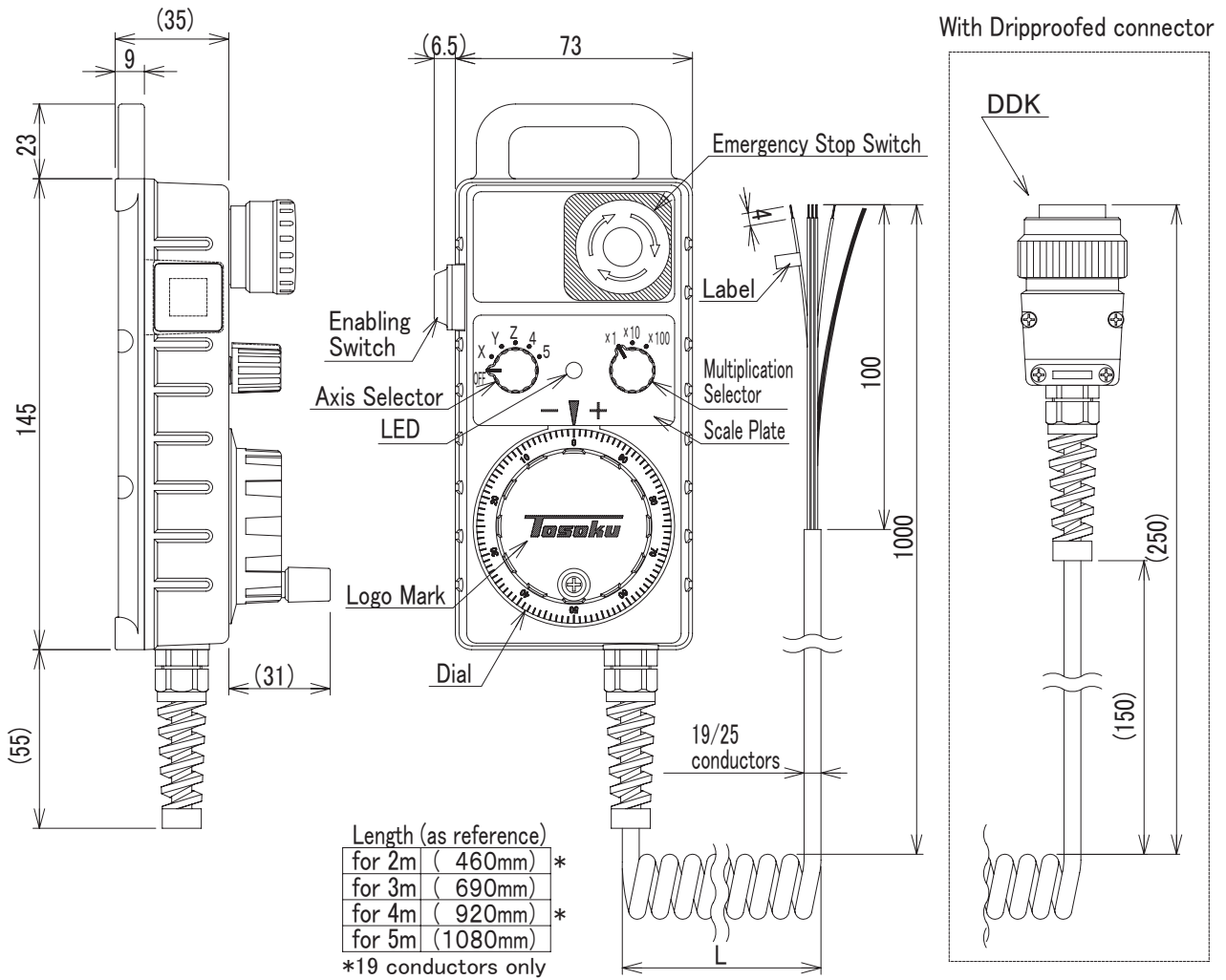
Warranty

- 1 year from the date of shipment.

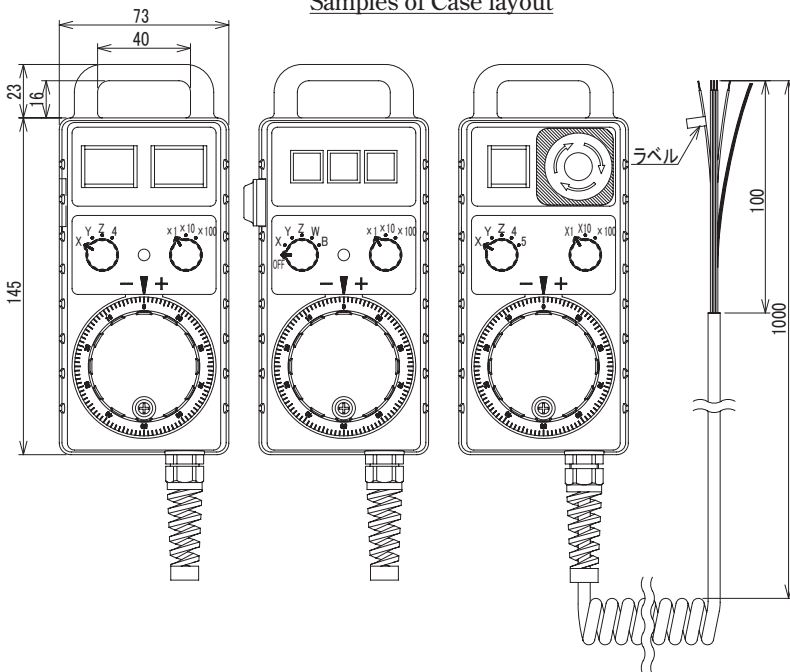
Dimensions (mm)

HM Unit with curl cord

※ This drawing is an example, it may differ according to number of swithes etc.



Samples of Case layout



Original Holder

